

## Rexcan DS<sup>2</sup>

### Dental and Small Object Scanner

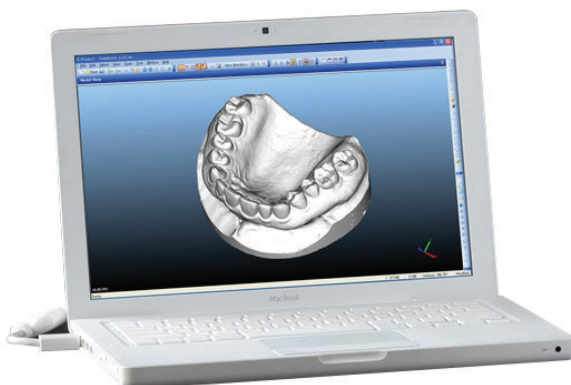
The Rexcan DS2 is a high precision industrial optical scanner suitable for dental applications, jewellery, coins and all other small precision components.

The scanner incorporates white light technology and twin cameras that enables a high resolution to be achieved without compromising quality of data.

The DS2 also has the advantage that the component to be scanned is mounted on a two axis rotation system; this means the part can be rotated and pivoted around a central axis in order that all difficult to scan areas can be quickly captured in a completely automatic process.

This technology was developed for the scanning of margin lines of teeth impressions which traditionally have proved extremely difficult to scan with other systems on the market; the precise scanning of complicated models has now led the DS2 to be the class leading small volume scanner in the market place.

Furthermore the small size of the DS2 is particularly useful in small labs where space is at a premium.



## FEATURES

### Twin-camera technology

The DS2 can achieve a single data set with two cameras. This allows a higher accuracy of data to be achieved than single camera systems.

### White light scanning

White light scanning technology allows the user to capture clearer less noisy data than conventional laser systems.

### Deep Scanning

The narrow angle of the cameras allow line of sight in difficult to reach areas such as narrow cavities.

### Sharp margin line

The twin camera technology enables optimal measurement of sharp margin lines of dental impressions.

### Variant scanning volume

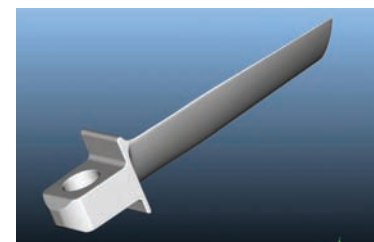
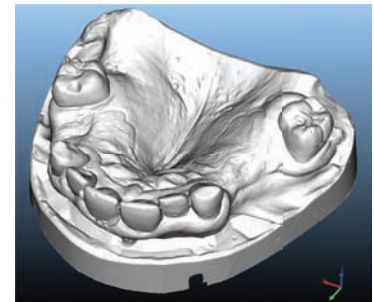
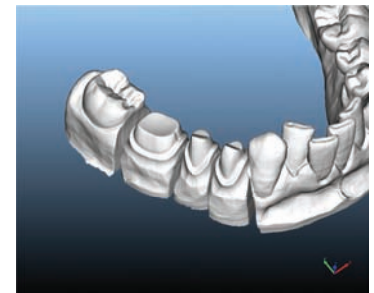
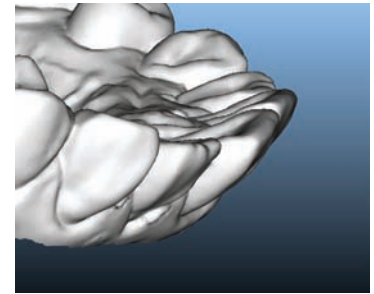
The DS2 has various scanning volumes which enable the optimal choice per application. Small coins and jewellery can be maximised using the smallest volume set up allowing for higher accuracy and greater detail to be achieved.

### Open System

The standard output from the DS2 is STL which enables easy transfer into other CAD/CAM systems.

### Compact size

Ideal for small labs 212mm x 340mm x 449mm.



CIMCORE 75 SERIES SPECIFICATION	
Size (W x H x D)	212mm x 340mm x 449mm
Weight	12.5kg
Scanning Area and point spacing	DS2 -16L 80mm x 69mm x 65mm (0.06mm) DS2 -25L 40mm x 35mm x 32mm (0.03mm) DS2 -35L 30mm x 25mm x 22mm (0.02mm)
Camera resolution	1.4 mega pixels
Accuracy	± 0.01mm
Scanning time	Single tooth 1-2 minutes Full Arch 3-4 minutes
Rotary Stage	2 axis movement (swing and rotation)
Light Source	LED (30,000 hours)
Interface	USB 2.0